

Cartosat-3: 45 cm PAN Sharpened Sub-Swath Data Products

Currently operational products from Cartosat-3 Mission are PAN 0.28m & MX 1.1m Ortho rectified and Geo Ortho kit products.

Ground processing team has put their best efforts in bringing out next set of three new products. In view of ease of handling and analysis as well to provide best quality data from both these high resolution PAN/MX sensors as a pair, we are adding the following products which are of user interest apart from the declared products.

1. MX 1.1m Standard product, ~10km sub-swath
2. PAN 45 cm Standard product, 17km swath
3. PAN Sharpened 45cm Product, ~10km sub-swath

Specifications:

- ❖ Geometric accuracy < 25m (RMSE)
- ❖ Radiometric accuracy – better than 10% (at 30% reflectance)
- ❖ Map Scale (fitness): 0.45m - 1:1400; 1.1m – 1:3000.
- ❖ MTF – 0.45m better than 10%; 1.1m better than 15% (for all spectral bands)

About New Products :

- MX 1.1m Standard Georeferenced product, 10 km swath: Product Code STUCMSOTD, 10km swath is constituted from the center of the array approximately, 4Km/6Km towards west and East (right and left side extreme swath pixels are omitted accordingly). This product enables uniform radiometric quality across the complete swath.



**Cartosat-3 New 0.45m PAN Sharpened product
EON IT Park, Pune**

- PAN 45cm Standard Georeferenced product, 17 km swath : Product code STUC00OTD. This resampled product enables improved sharpness.
- PAN Sharpened 45cm Product, 10km swath: Product code STUCMSXTD, 10km swath is constituted from the center of the array approximately, 4Km/6Km towards west and East (right and left side extreme swath pixels are omitted accordingly). This product enables uniform radiometric quality across the complete swath and improved sharpness

Suitability :

- Suitable for small AOI or Point of Interest based studies

Web links:

bhoonidhi.nrsc.gov.in
bhuvan.nrsc.gov.in

For further details, please

☎ +91-40-2388 4423

✉ bhoonidhi@nrsc.gov.in, data@nrsc.gov.in,
gdndc@nrsc.gov.in

NRSC/DPA/March 2024

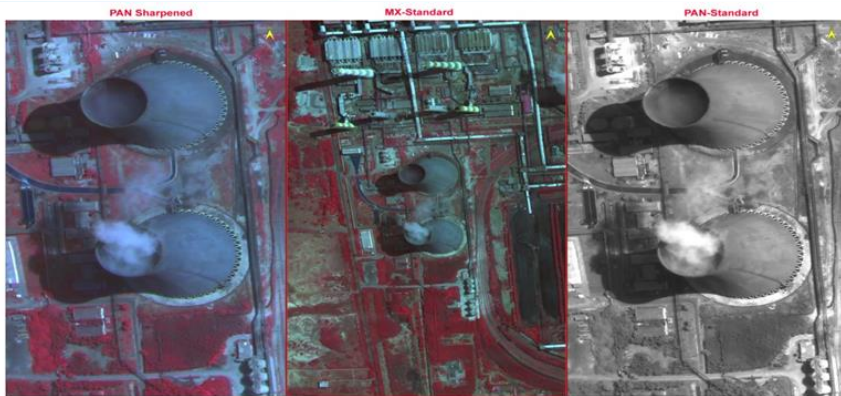
Cartosat-3 45cm PAN Sharpened, Sub Swath



AOI: EON IT Park ,Pune
Cartosat-3 45cm PAN Sharpened,
1.1m MX and 45cm PAN



AOI: ISRO IMGEOs CAL-VAL
Site,Hyderabad
Cartosat-3 45cm PAN Sharpened,
1.1m MX and 45cm PAN



AOI: NTPC, Vishakapatnam
Cartosat-3 45cm PAN Sharpened,
1.1m MX and 45cm PAN

Disclaimer:

Optical Butting zone regions occasionally suffer noise and blur.

Web links:

bhoonidhi.nrsc.gov.in
bhuvan.nrsc.gov.in



For further details, please

① +91-40-2388 4423

✉ bhoonidhi@nrsc.gov.in, data@nrsc.gov.in,
gdndc@nrsc.gov.in