

### NC2G – NETCDF to GeoTiff converter for OCM3 Products

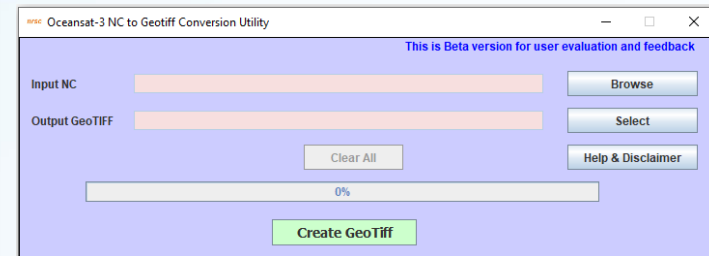
NetCDF format is designed to store multidimensional array-based scientific data. It Supports storing various data types for variables, including integers, floating-point numbers, characters, and user-defined data types. This flexibility allows it to handle a wide range of scientific data types. Though NETCDF is a common data format, Many of the COTS packages are not yet updated to handle NETCDF format. Moreover there are no open source packages are available to analyze and visualize NETCDF products. Whereas all open source and COTS packages are proven to handle Geo-tiff format.

**NC2G** is a in-house developed s/w tool to convert NetCDF Level 1C/2C data products of Oceansat-3 OCM products to Geotiff format. This tool is available at Bhoonidhi for download under processing Tools .

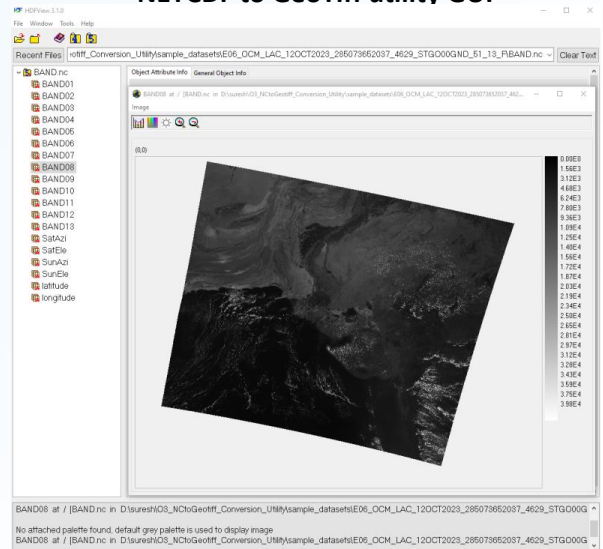
#### Features:

- ✓ works for L1 ( Terrain corrected ) and L2(geo-physical) products
- ✓All array attributes are saved as individual TIFF files
- ✓User friendly GUI
- ✓All Java code built using Java Version jdk1.7 or higher- All you need Java jre7 or higher on your system with suitable GDAL library to run this utility.
- ✓Does not require any installation as program can run by invoking it through double clicking the run.bat or through command mode.

<https://bhoonidhi.nrsc.gov.in/bhoonidhi/help/tools.html>



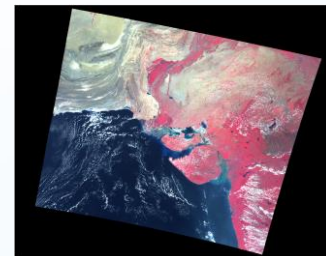
#### NETCDF to GeoTiff utility GUI



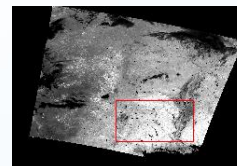
#### Input NETCDF file with different bands



GeoTiff – GAC-L1C- RGB



GeoTiff – LAC-L1C- RGB



GeoTiff – GAC-L2C- NDVI

Web links:

[bhoonidhi.nrsc.gov.in](http://bhoonidhi.nrsc.gov.in)  
[bhuvan.nrsc.gov.in](http://bhuvan.nrsc.gov.in)

For further details, please

☎ +91-40-2388 4382

✉ [ghmdpg@nrsc.gov.in](mailto:ghmdpg@nrsc.gov.in)