

**Disclaimer: Cartosat-3 PAN Standard Data Products**

**PAN (\*Nominal mode of Operations)**

The image may be affected with occasional blur, noise, banding or radiometric imbalance (more prominently in optical butting zone/region), few saturated pixels based on the viewing geometry and feature, artifacts near saturated pixels like ringing, few zero pixels and ghost features in the water body with hard stretching (Ref: Fig1)

**Fig 1:**



**\*Nominal mode of operations: PANTDI-132/45; Tilt angle within +/- 10deg**

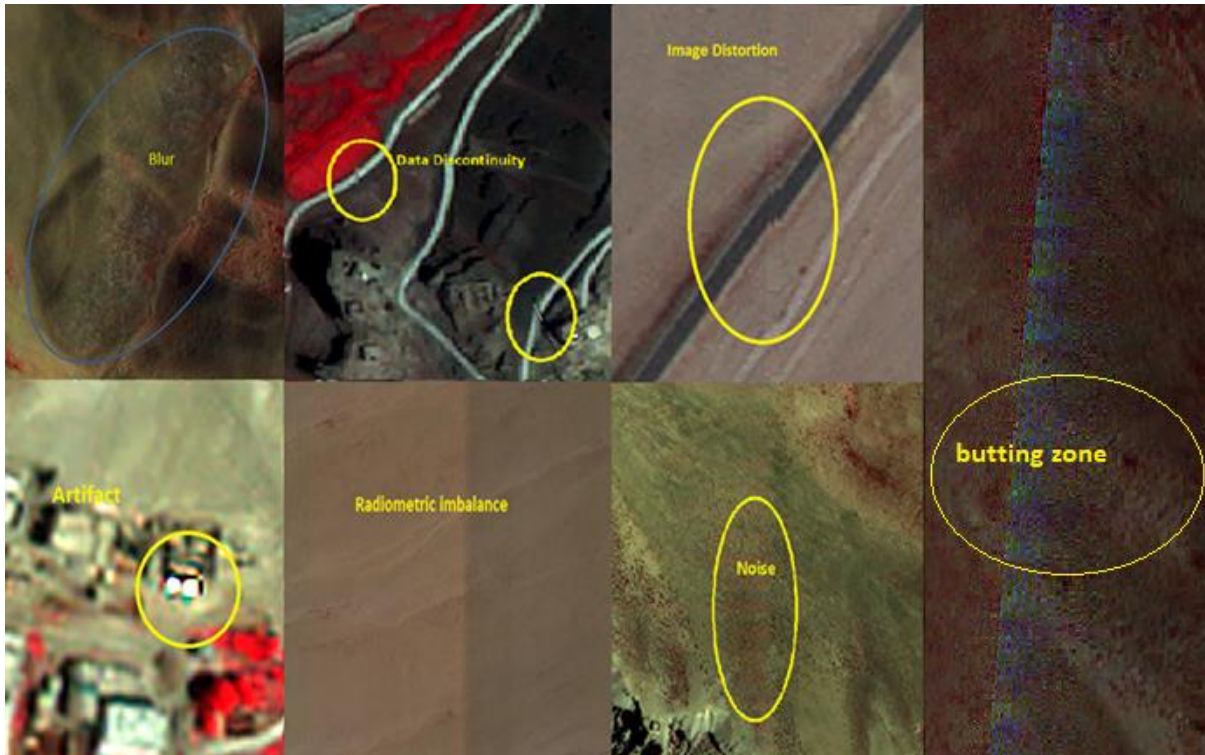
**Disclaimer: Cartosat-3 MX Standard Data Products**

**MX (\*Nominal mode of Operations)**

For Band3, ~370m equivalent pixels from the center of the swath towards right side of the swath are synthesized using synchronously acquired data.

The image may be affected with occasional blur, noise, banding or radiometric imbalance (more prominently in optical butting zone/region), few saturated pixels based on the viewing geometry and feature, artifacts near saturated pixels like ringing, few zero pixels and ghost features in the water body with hard stretching. At few locations in extreme left and right side of the image may show discontinuity due to noise ( Ref: Fig1)

**Fig 1:**



**\*Nominal mode of operations: MX-TDI 45; Tilt angle within +/- 10deg**